

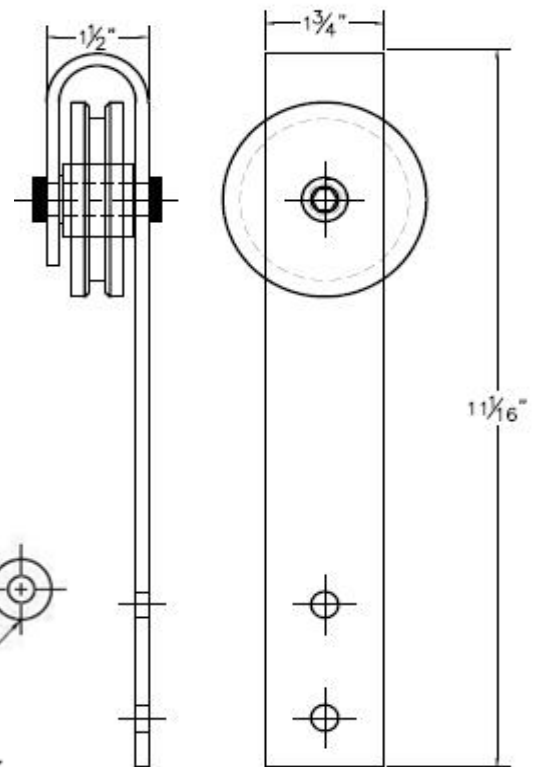


Barn Door

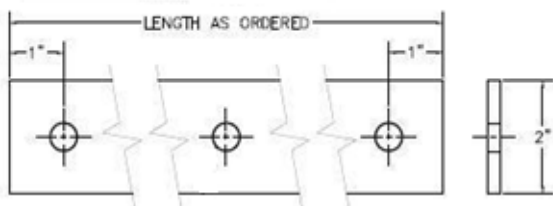
Production Code: DSI-BDS-S



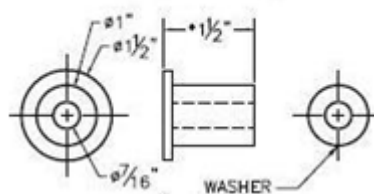
LOFT HANGER



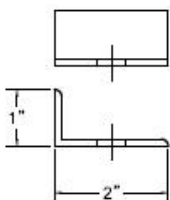
TRACK



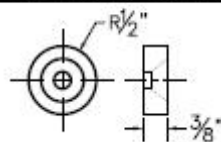
SPACER



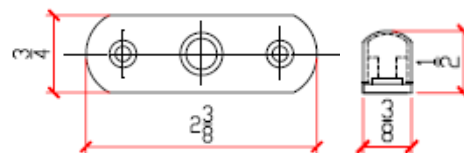
DOOR STOP



ANTI-JUMP BLOCK



DOOR GUIDE



Industrial Style Track

(1) Track	Steel Flat Track. 1/2" Hole Spacing, Differs Depending Upon Track Length.
(2) Hangers	Run Along Track to Be Attached the Door.
(4) Spacers	Allow Clearance Between Door and Wall. Spacer Size and Type Differs Depending On Clearance Needed.
(1) Door Guide	Floor Mounted. Keep Door Align to Prevent it From Swing and Swaying.
(2) Door Stops	Prevent Door Running Through the End of Track.
(2) Anti-Jump Blocks	Prevent Door From Derailing.
Door Weight	It Is Recommended A Door Weighing Up to Max. 330LBS.
Standard Finish	Brushed/Polished are standard Finish, Black and Antique Bronze Finishes are available with minimum order 100 plus.